

# burda style

## Instructions for Download

The details for the individual sizes of a pattern are listed one after another in the instructions, separated by hyphens. If just one detail is given, it applies to all sizes.

### 002 Dress ••

Sizes 34, 36, 38, 40, 42, 44  
Length from waist 58 cm

#### You will need:

Fine gabardine, 140 cm wide: 1.75 – 1.75 – 1.80 – 1.80 – 1.80 m.  
Elastic for neckline, 1.5 cm wide: 0.85 – 0.85 – 0.85 – 0.90 – 0.90 – 0.95 m.  
Elastic for sleeves, 1 cm wide: 0.70 m.  
Vilene G 785.

1 in-seam zip, 60 cm long, and special presser foot.

3 buttons. Sewing thread.

**Fabric recommendation:** Light-weight dress fabrics.

#### Paper pattern:

Cut out pattern in the required size. The markings (x) for the buttons are marked in piece 5 for size 34. Redraw markings for the remaining sizes: the top one at the same distance to the top edge of the facing as for size 34, the bottom one applies for all sizes, and the third one exactly in the centre.

#### Seam- and hem allowances:

Seams & edges 1.5 cm, hem 4 cm, sleeve hems 2.5 cm.

#### Cutting out:

1 Front to fabric fold 1x  
2 Front skirt panel to fabric fold 1x  
3 Back 2x  
4 Back skirt panel 2x  
5 Front facing 2x  
6 Sleeve 2x

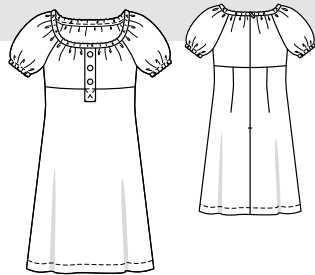
a) Bias-cut neckline facing, 113 – 117 – 121 – 125 – 129 – 133 cm long in total, 4 cm wide, finished width 2 cm.

**Interfacing,** see grey area in cutting-out plan. Reinforce outer facing only.

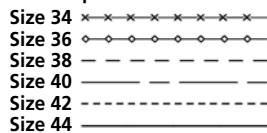
#### Sewing:

■ Sew back darts; iron towards the centre.

■ Sew back sections to the back



#### Pattern pieces 1 to 6



skirt panels and front section to the front skirt panel. Press seam allowances upwards.

■ **Front facing:** Stitch facing sections together with right sides facing, leaving the top edge open for turning. Trim seam allowances and cut off diagonally at the corners. Turn facing right side out. Press. Topstitch the left-side facing edge from the top down to the marked crossways stitch line. Pin facing onto the front section so that it meets up with joining line. Edgestitch right edge of facing and topstitch the bottom end of the facing as marked in the pattern. Baste top edge of facing in place.

■ **Side seams:** Place back sections on front section with right sides facing. Pin side seams and sew. Press seam allowances open and neaten.

■ **Sleeves:** Stitch sleeve seams from the top down to the marked hem-

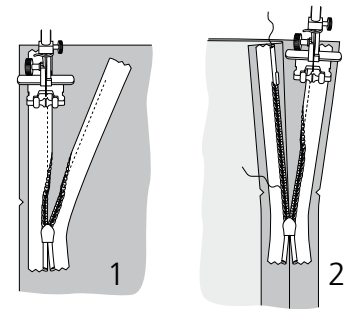
line; the rest of the seam remains open for pulling through the elastic. Press seam allowances apart. Iron over seam allowances of the bottom sleeve edges inwards; turn under to 1.5 cm width and edgestitch. Cut elastic (1cm wide) into two sections of equal length. Pull both pieces of elastic strips through the bottom sleeve edges. Sew ends together – finished elastic circumference 28 – 29 – 30 – 31 – 32 – 33 cm.

Pin sleeves to armholes with right sides facing; sleeve seams and side seams as well as cross marks 4 meet up. Sew. Neaten seam allowances and iron open from the top up to the beginning of the curve in each case.

■ **Neckline facing, in-seam zip, centre-back seam:** Fold neckline facing in half lengthways and press; the right side of the fabric is outside. Open facing out flat once more. Iron over the seam allowance inwards on one long edge. Pin the other edge of the facing right sides together to the neckline edge. Stitch. Trim seam allowances and iron them into the facing.

Open zip and flatten the coil with your thumbnail so that the seam line between the tape and the coil can be seen. Place the right half of the open zip top-side-to-right-side on the right edge of the opening. Distance from tape edge to seam-allowance edge, 5 mm (= seam-allowance width minus 1cm tape width). The teeth begin in the centre of the facing (= ironed fold). Pin the top end of the zip to the edge of the seam allowance. Lower the presser foot onto the zip so that the coil lies in the groove just to the right of the needle (1). Sew the zip in place, starting at the top and stopping just short of the marked opening. Close the zip. Place the

second zip tape with its top side on the left back edge of the opening and pin in place at the top. Open the zip again. Lower the presser foot onto the top end of the zip so that the coil lies in the groove just to the left of the needle (2). Stitch the zip in place. Sew the centre-back seam, starting at the bottom and working up to the zip. Press seam allowances open and neaten. Fold the neckline facing inwards along the ironed fold and pin above the joining seam. From the right side of the dress, stitch exactly in the joining seam, sewing



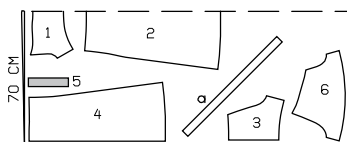
the inside half in place. Pull elastic (1.5cm wide) through the facing and pin the ends in place next to the zip, finished elastic length 78 – 81 – 83 – 86 – 88 – 90 cm. Stitch together the short edges of the facing for approx. 1 cm next to the zip, catching the ends of the elastic as you do so. Pull ends of the elastic slightly out of the facing ends and cut off.

■ Fold hem allowance inwards and under, then straight-stitch 4 cm from the edge.

■ Sew buttons onto the facing, catching the front as you do so.

#### Cutting-out plan

Fine gabardine, 140 cm wide



Cut out from a double layer of fabric, right sides together.

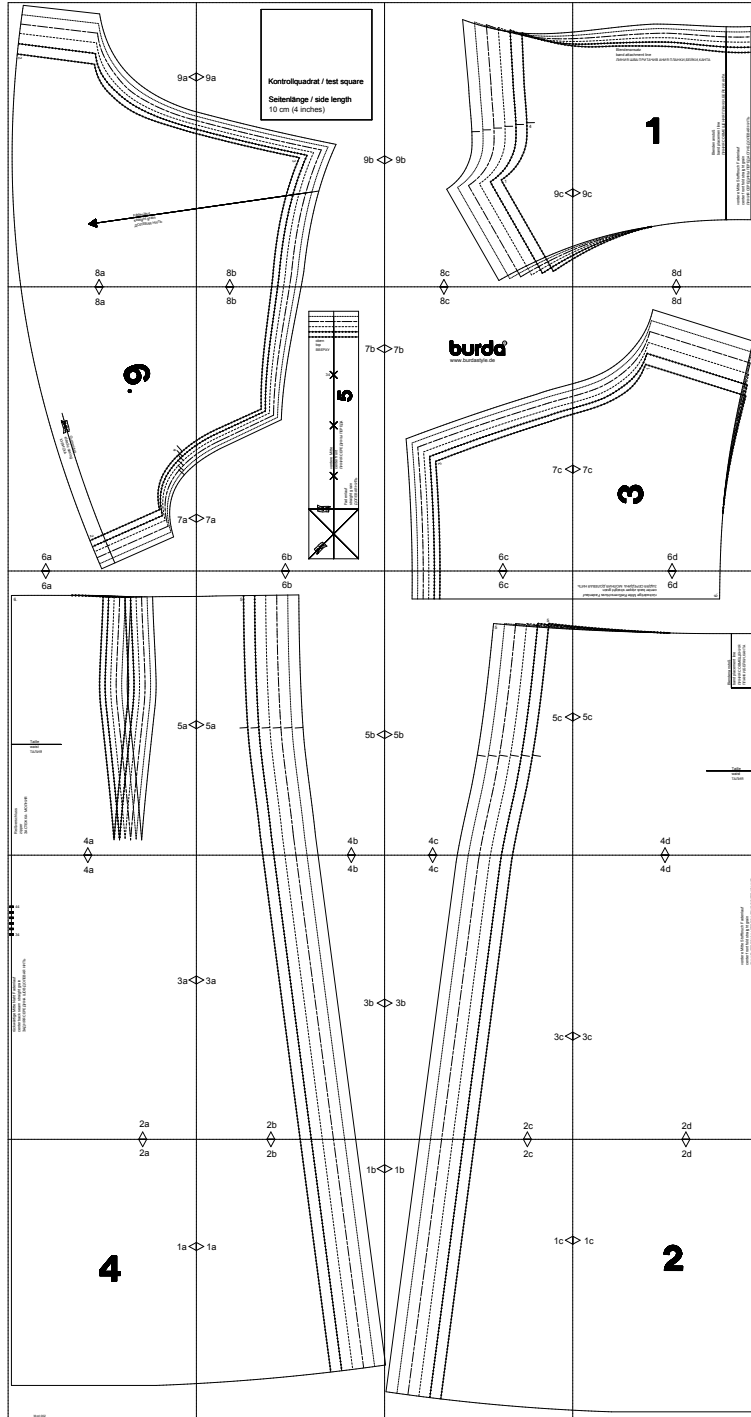
## BURDA SIZE CHART

WOMEN'S SIZES for a height of 168 cm

Size	34	36	38	40	42	44	46	48	50	52
Bust	cm 80	84	88	92	96	100	104	110	116	122
Waist	cm 62	66	70	74	78	82	86	92	98	104
Hips	cm 86	90	94	98	102	106	110	116	122	128
Front waist length	cm 43	44	45	46	47	48	49	50	51	52
Bust depth	cm 25	26	27	28	29	30	31	32	33	34
Back length	cm 41	41	42	42	43	43	44	44	45	45
Back width	cm 33.5	34.5	35.5	36.5	37.5	38.5	39.5	41	42.5	44
Shoulder width	cm 12	12	12	13	13	13	13	14	14	14
Sleeve length	cm 59	59	60	60	61	61	61	61	62	62
Upper arm	cm 26	27	28	29	30	31	32	34	36	38
Neck	cm 34	35	36	37	38	39	40	41	42	43

Copyright 2010 by Verlag Aenne Burda GmbH & Co. KG, Am Kestendamm 2, D-77652 Offenburg, Germany.

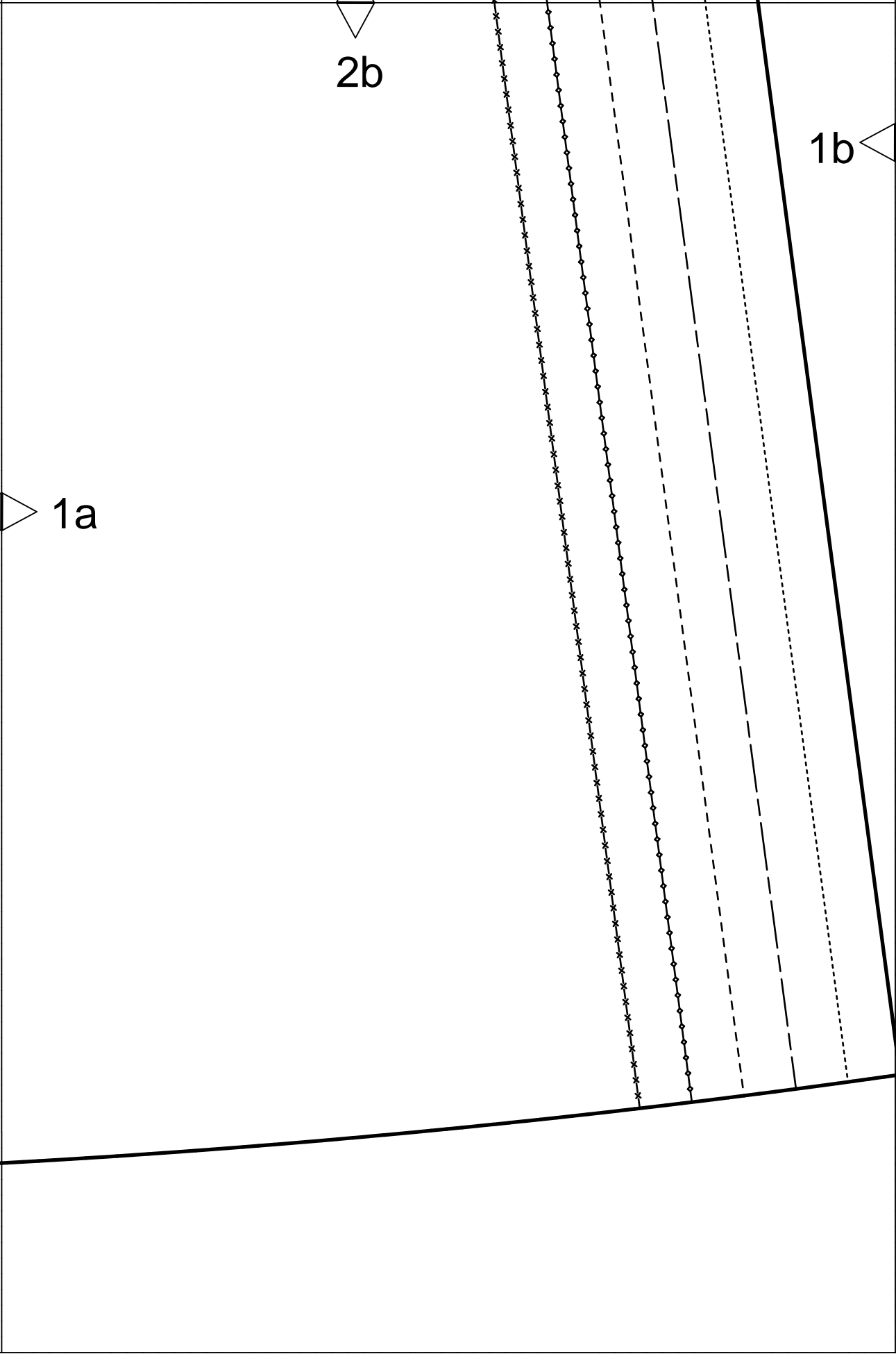
All models, pattern pieces and drawings are protected by copyright. The sewing of these projects for commercial purposes is prohibited. The publishers accept no liability for damages arising from improper handling of the pattern or materials, incorrect execution of the tips and instructions, or improper use of the models.

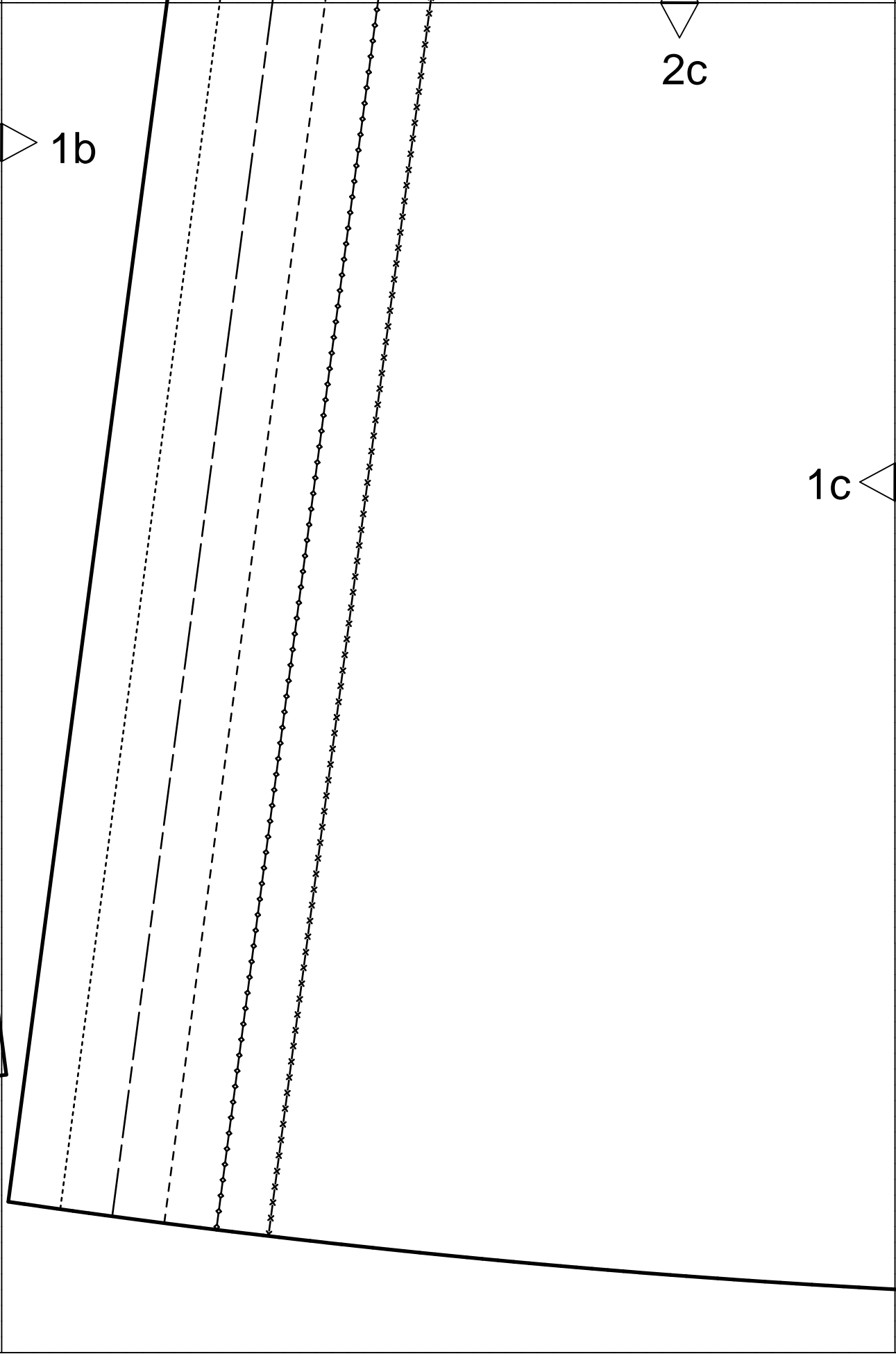


2a

1a

4





2d

1c

**2**

4a



44

34

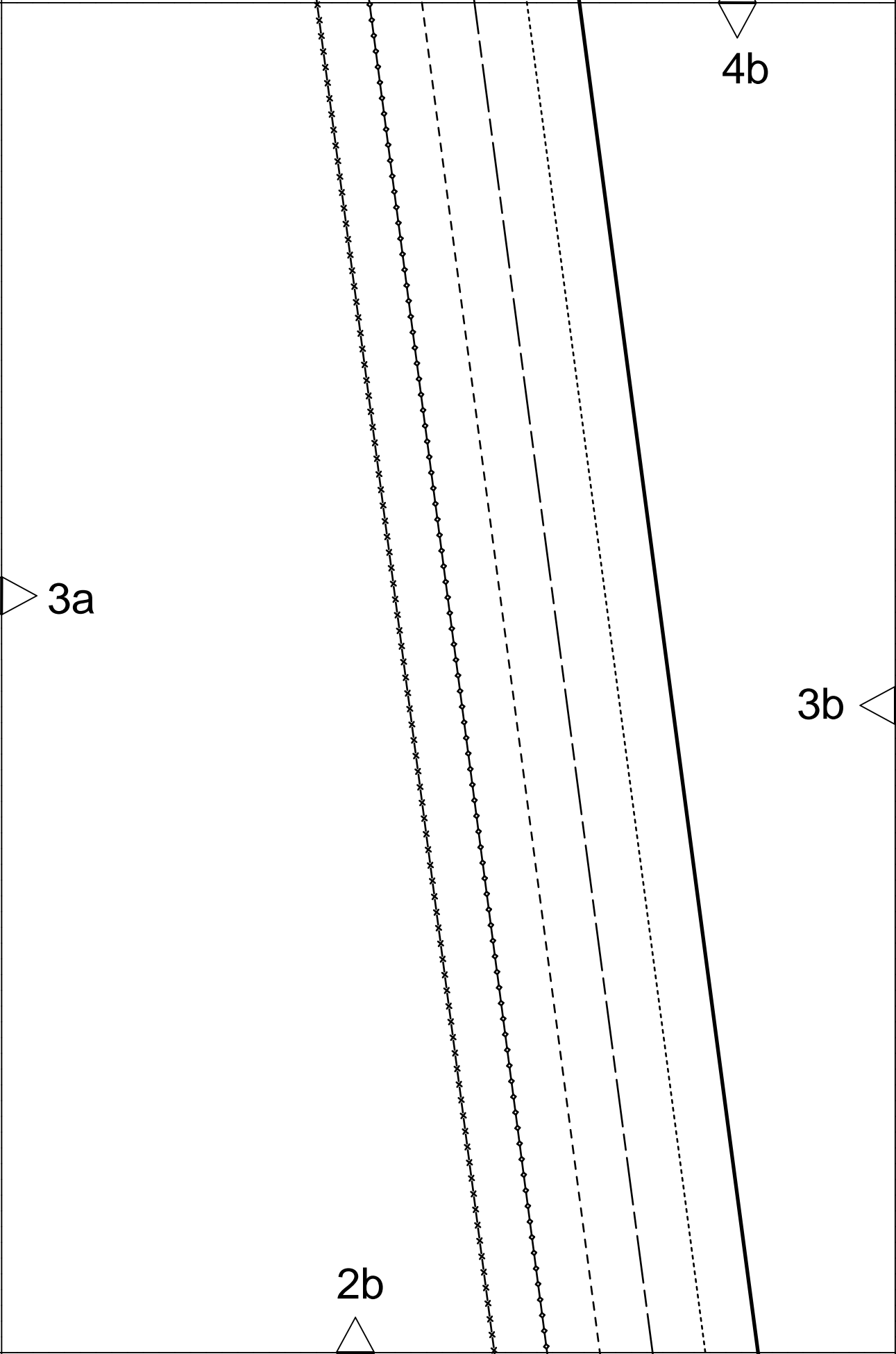
rückwärtige Mitte Naht Fadenlauf  
center back seam straight grain  
ЗАДНЯЯ СЕРЕДИНА ШОВ ДОЛЕВАЯ НИТЬ

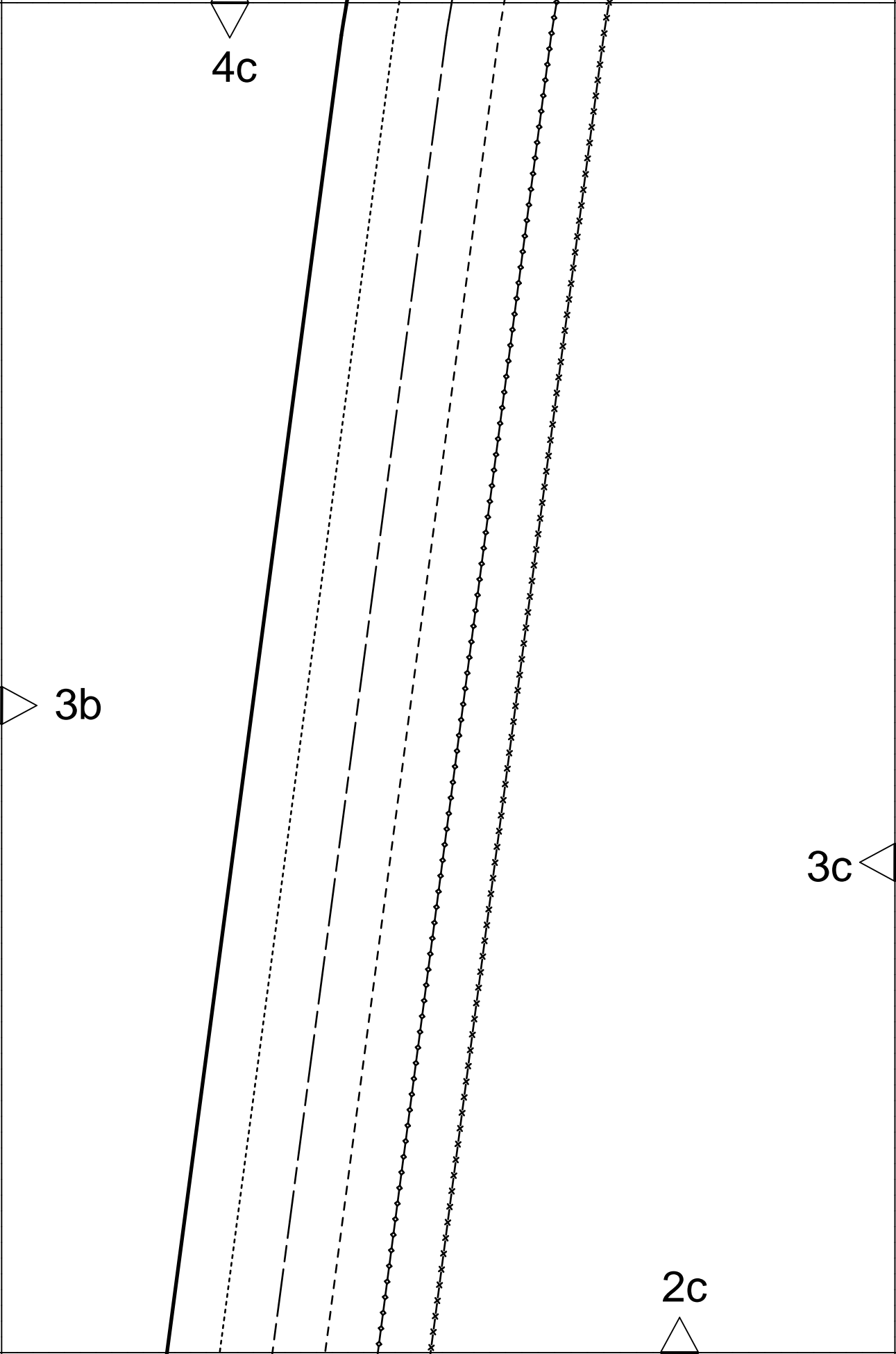
3a



2a









4d



3c

2d



vordere Mitte Stoffbruch Fadenlauf  
center front fold straight grain  
ЛИНИЯ СЕРЕДИНЫ ПЕРЕДА СГИБ ДОЛЕВАЯ НИТЬ

6a

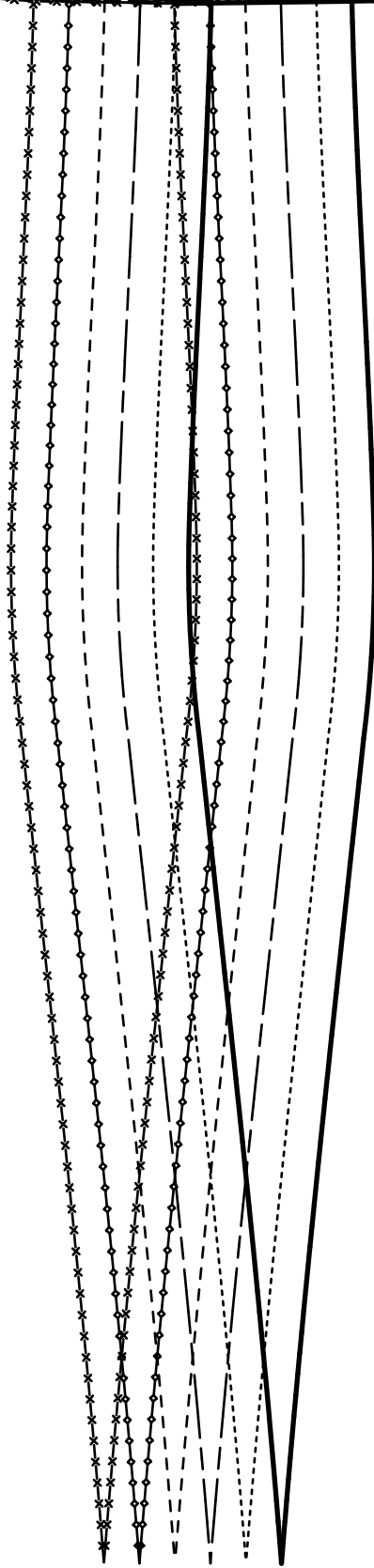
6.

Taille  
waist  
ТАЛИЯ

Reißverschluss  
zipper  
ЗАСТЕЖКА-МОЛНИЯ

4a

5a



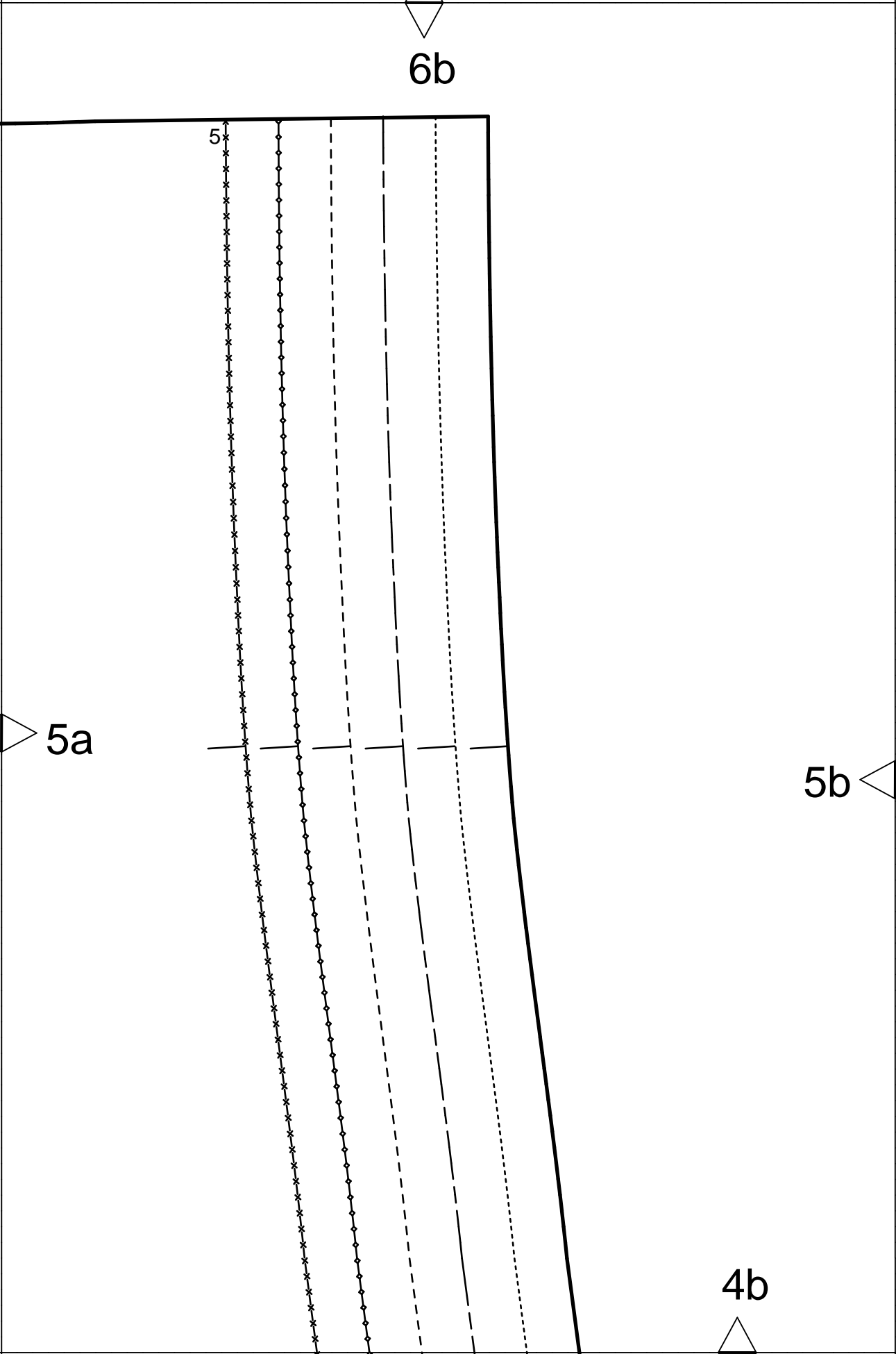
6b

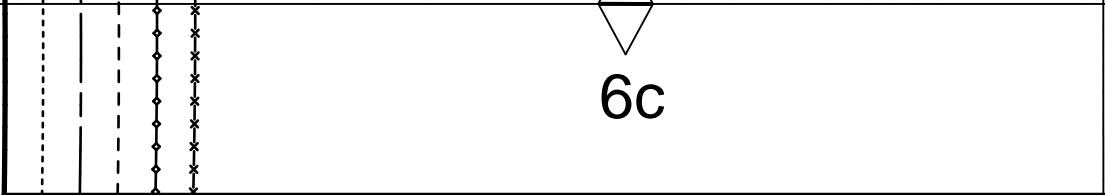
5

5a

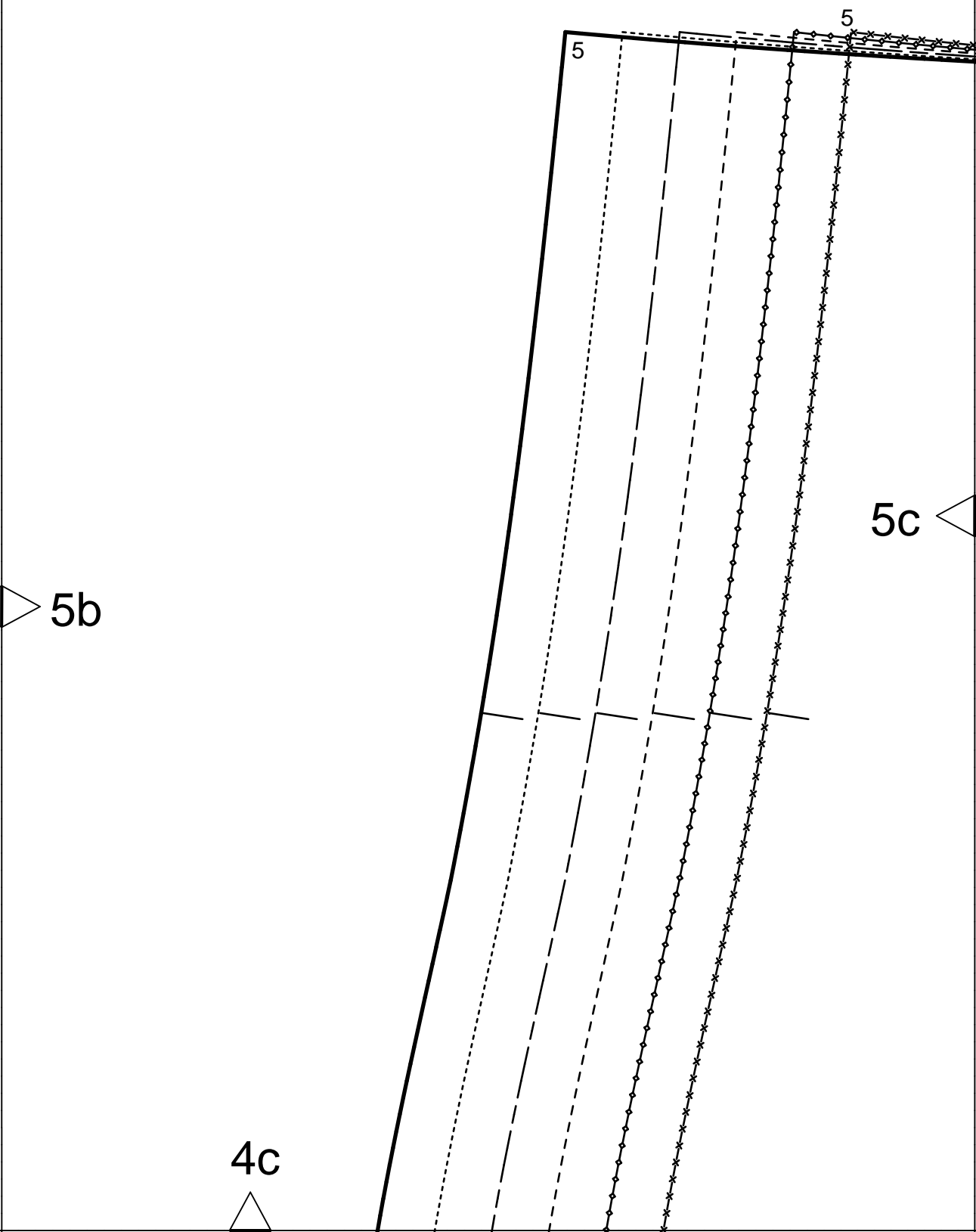
5b

4b





6c



5

5

5b

5c

4c

rückwärtige Mitte Reißverschluss Fadenlauf  
center back zipper straight grain  
ЗАДНЯЯ СЕРЕДИНА МОЛНИЯ ДОЛГЕВАЯ НИТЬ

6d

6.

Blendenanstoß  
band placement line  
ЛИНИЯ СОВМЕЩЕНИЯ  
ПЛАНКИ, БЕЙКИ, КАНТА


Taille  
waist  
ТАЛИЯ

4d

5c

8a

9

  
Gummirizung  
elastic casing  
КВИМСКА

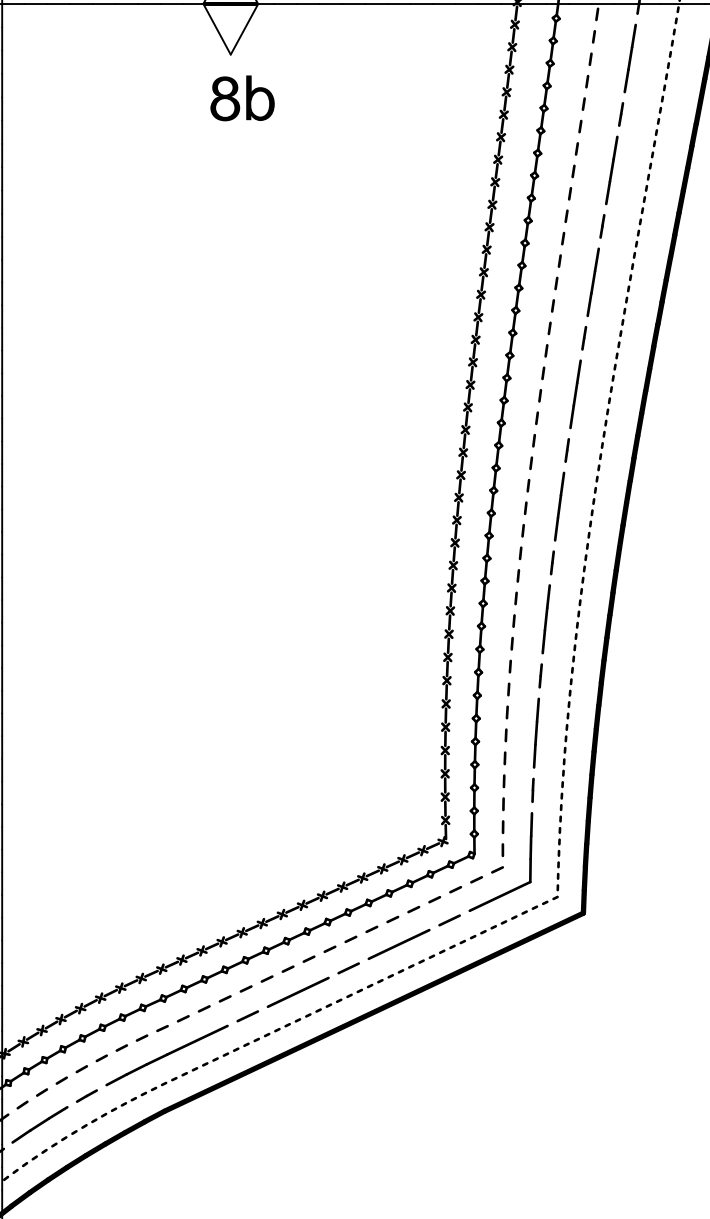


7a

6a

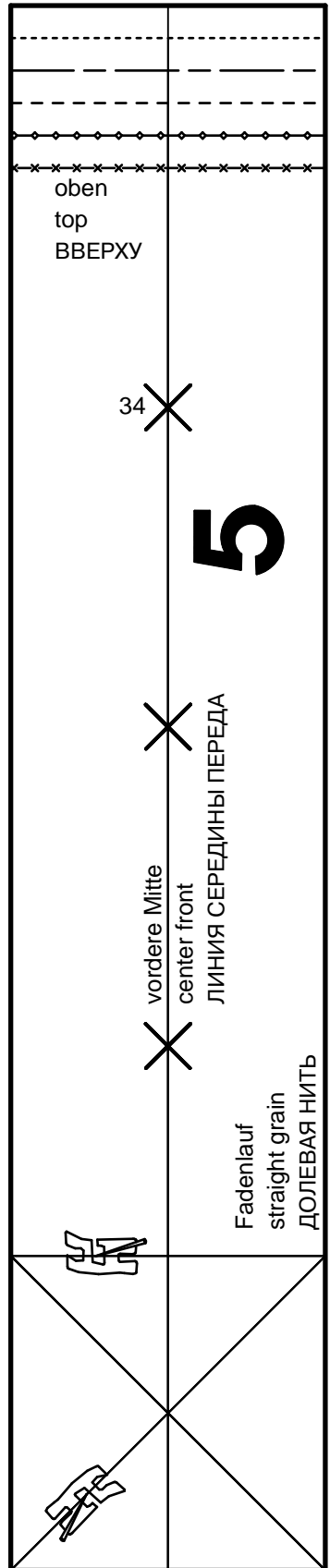


8b



7a

6b

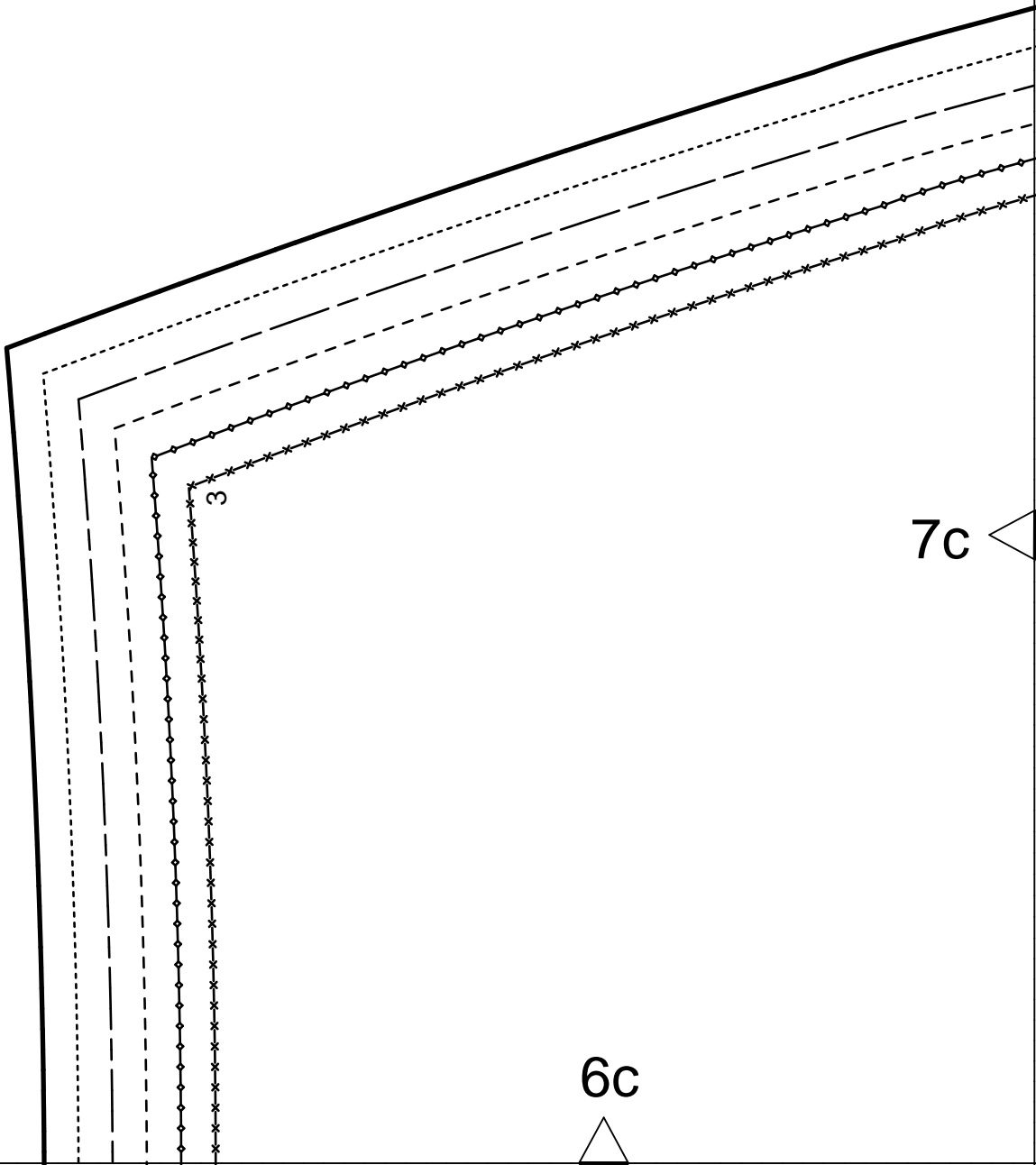


7b

8c

7b

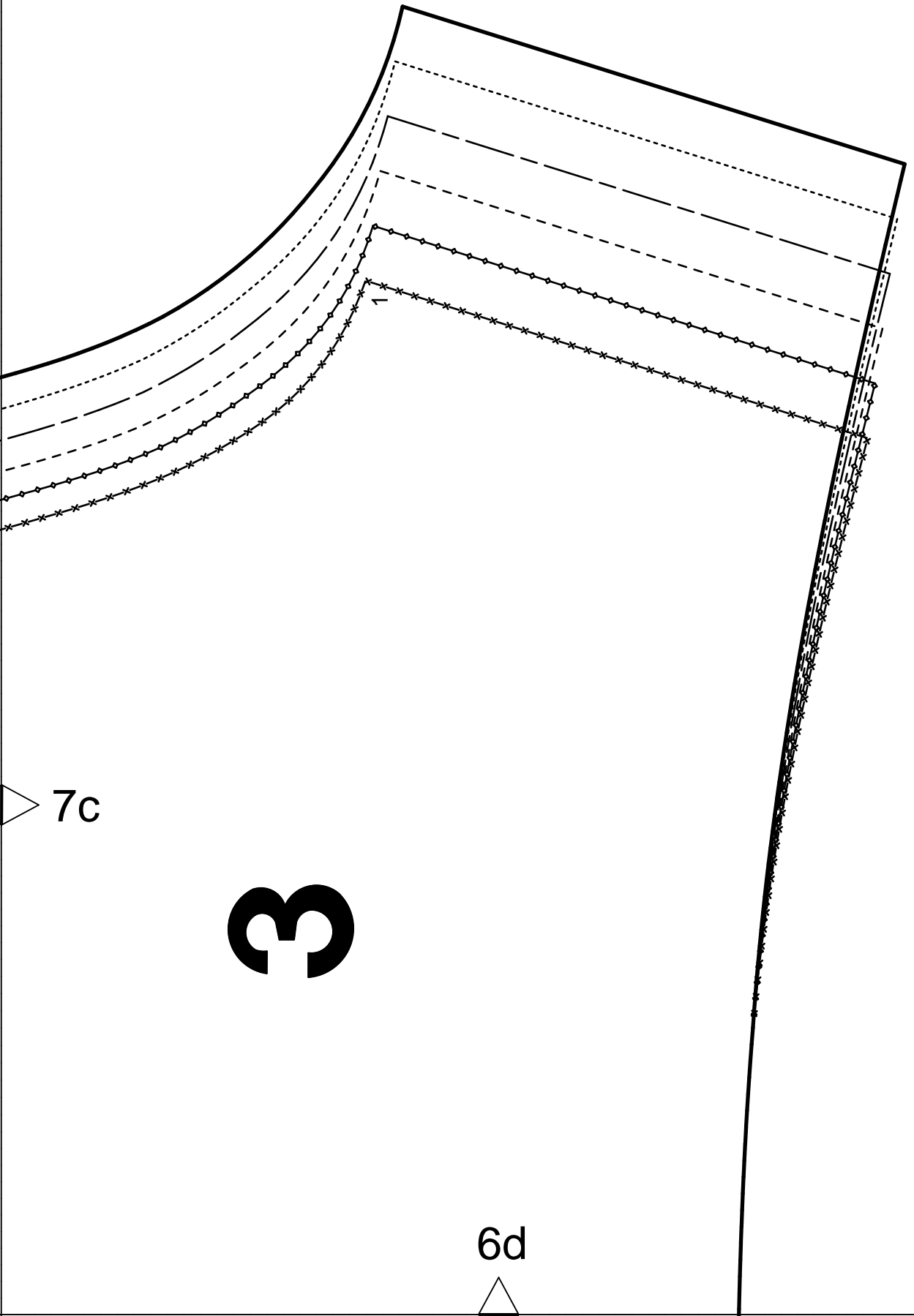
**burda**<sup>®</sup>  
www.burdastyle.de



7c

6c

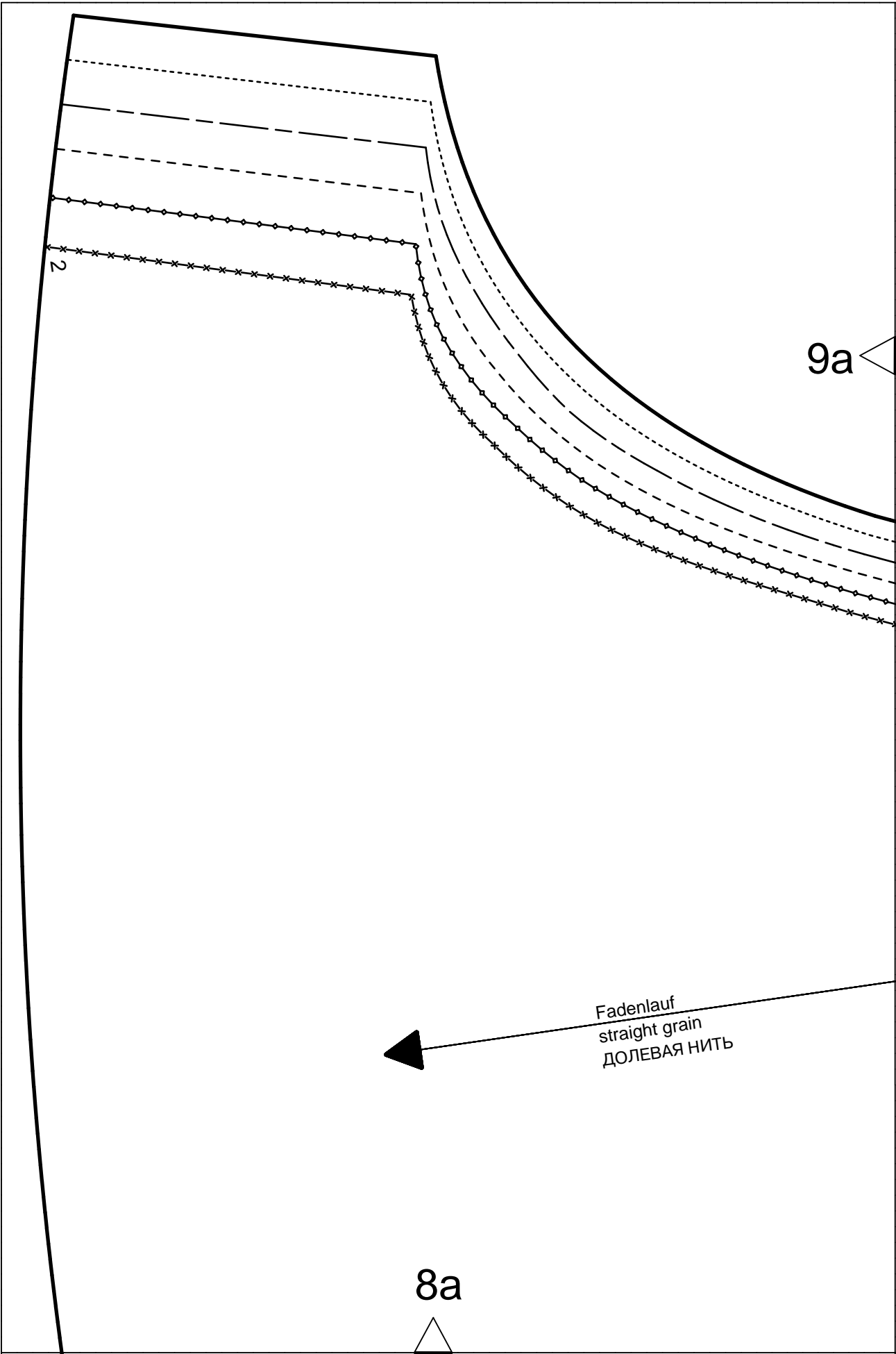
8d



6d

7c

3



2

9a

Fadenlauf  
straight grain  
ДОЛЕВАЯ НИТЬ

8a

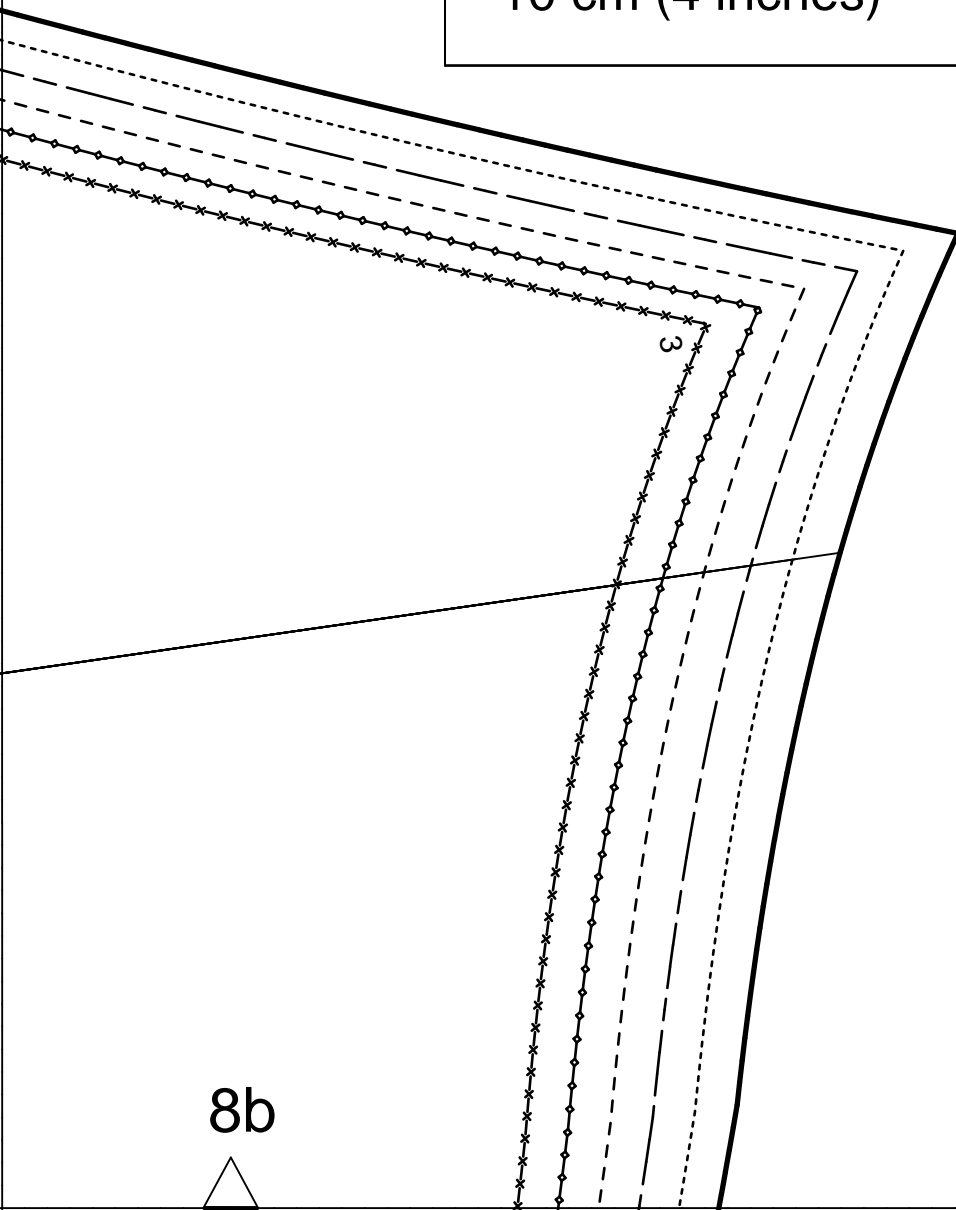
9a

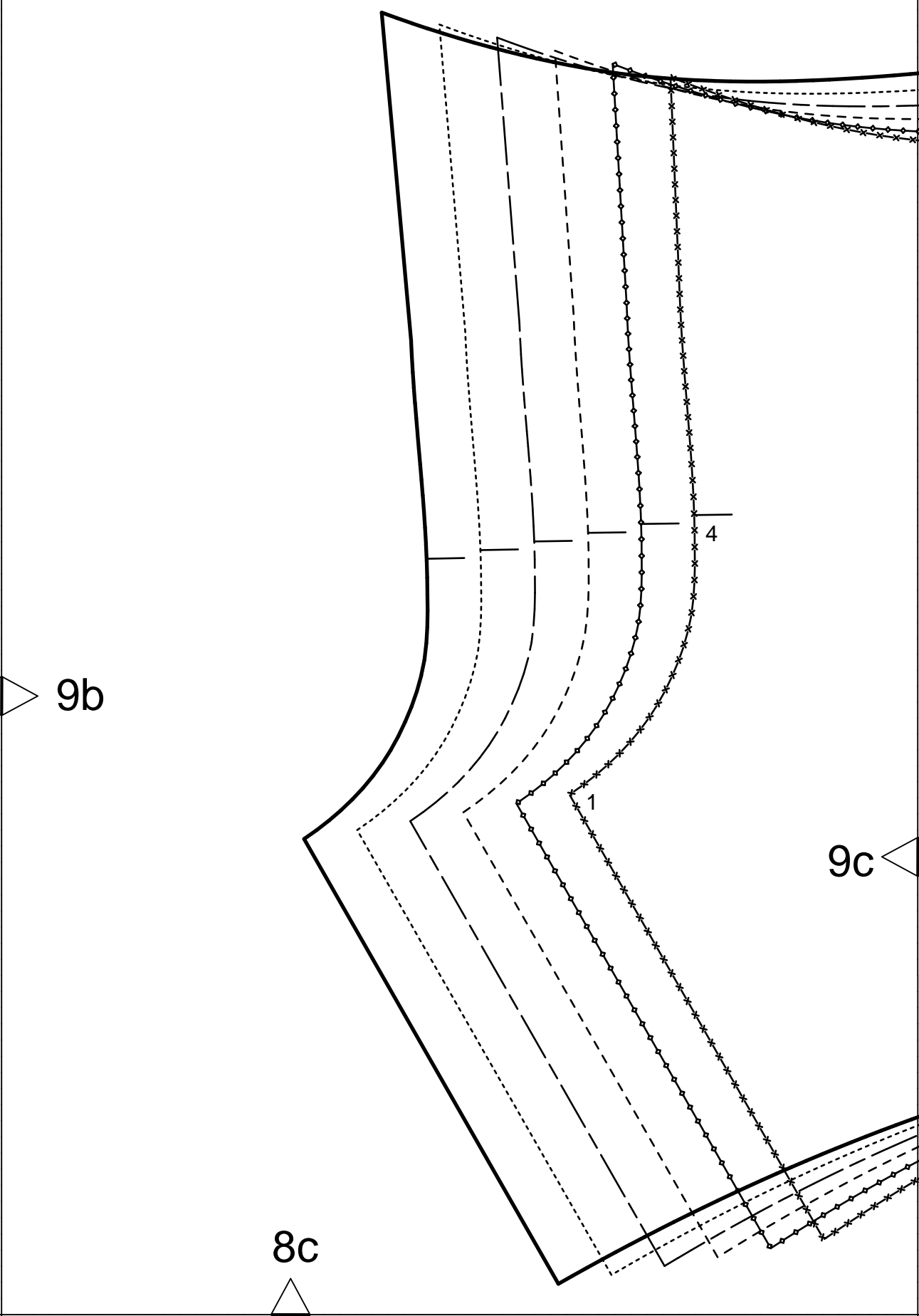
Kontrollquadrat / test square

Seitenlänge / side length  
10 cm (4 inches)

9b

8b





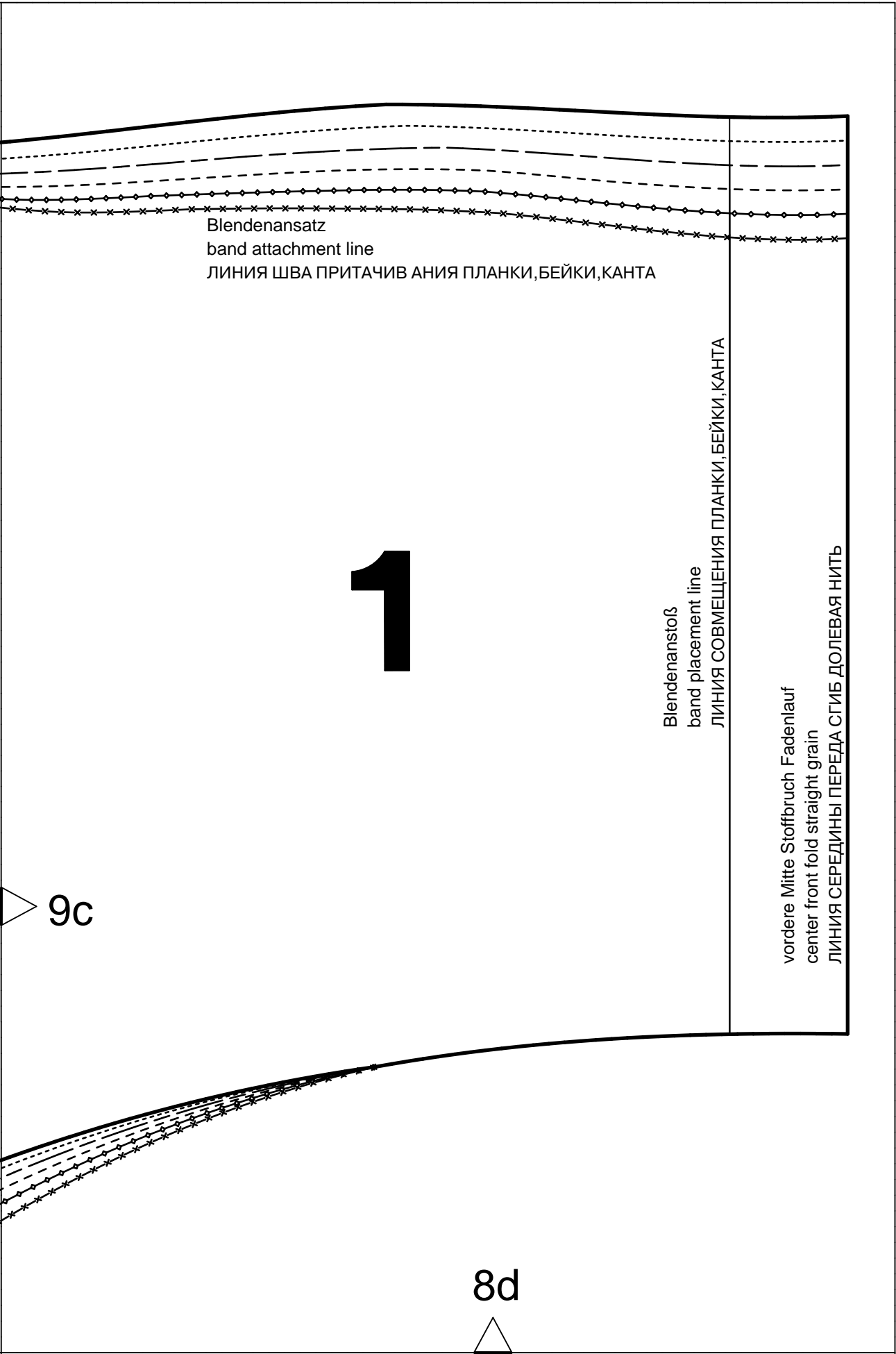
9b

9c

8c

4

1



Blendenansatz  
band attachment line  
ЛИНИЯ ШВА ПРИТАЧИВАНИЯ ПЛАНКИ, БЕЙКИ, КАНТА

1

Blendenanstoß  
band placement line  
ЛИНИЯ СОВМЕЩЕНИЯ ПЛАНКИ, БЕЙКИ, КАНТА

vordere Mitte Stoffbruch Fadenlauf  
center front fold straight grain  
ЛИНИЯ СЕРЕДИНЫ ПЕРЕДА СГИБ ДОЛЕВАЯ НИТЬ

9c

8d